

# **EXIT POLLS REPORT**

**2023-2024**



**Internal Quality Assurance Cell  
(IQAC) Loyola College (Autonomous)  
Chennai – 600 034**

# Contents

---

## **Exit Polls Report**

1. Shift - I
2. Shift - II

# **Exit Poll Report**

## **Shift-1, Loyola College, Chennai**

### **Summary**

The Exit Poll Report for Shift-1 at Loyola College, Chennai, presents a comprehensive overview of students' experiences and perceptions in several key areas of their academic life. The survey covered preferences in the programme of study, gender distribution, course quality, facilities, and overall satisfaction.

In terms of programme preferences, Arts was the most favored, with 45.81% of students opting for it, followed closely by Science at 43.32%. Gender distribution showed a predominantly male student body, comprising 82.58% of respondents, while females made up 17.33%.

The skill-based and internship programmes received positive evaluations, with significant portions of students rating them as "Good" and "Excellent." However, there was some variation in opinions on teaching quality, with 39.72% rating it as "Satisfactory." Adherence to the syllabus was seen positively by 45.81% of students, though a considerable number felt it was only sometimes followed.

The mentoring programme, though beneficial to many, had mixed feedback, with 36.13% finding it beneficial to some extent and 17.79% considering it highly useful. Non-teaching staff were generally seen as helpful, with 33.46% rating them as "Mostly helpful." Students were also generally satisfied with various facilities like the library and classrooms, though there were concerns over laboratory facilities, sports facilities, and internet services.

Feedback on the student council, departmental associations, and online staff evaluations revealed some dissatisfaction, with many students feeling that these aspects were "Satisfactory" but in need of improvement. Overall, students rated their experience at Loyola College positively, with 43.96% finding it "Highly rewarding and useful."

In conclusion, while Loyola College provides a solid academic foundation, the survey indicates areas for improvement, especially regarding facilities, evaluations, and certain student services. Enhancing these aspects could further elevate the institution's offerings and support for its students.

### **Findings of the Exit Polls (Shift-1)**

The exit poll conducted at Loyola College, Chennai, for Shift-1 provides a detailed insight into the students' perceptions and experiences across various facets of their academic journey. The results cover preferences related to the programme of study, gender distribution, course quality, facilities, and overall experience, among other key areas.

#### **1. Programme of Study Preferences:**

Among the students surveyed, Arts emerged as the most preferred stream, with 45.81% of the respondents opting for it. Science followed closely with 43.32%, while Commerce-related courses, including BBA and BCom Corporate, received 10.88% of the votes.

## **2. Gender Distribution:**

The gender distribution revealed a predominant male representation, with 82.58% identifying as male. Female students comprised 17.33% of the respondents, and a small fraction (0.09%) identified as transgender.

## **3. Quality and Relevance of Skill-Based Programme:**

When assessing the quality and relevance of the skill-based programmes, 42.13% rated it as "Good," while 19.42% deemed it "Excellent." A smaller portion of students, 36.61%, considered it "Satisfactory," with only 1.84% rating it as "Bad."

## **4. Quality and Relevance of Internship Programme:**

The internship programme also received positive feedback, with 40.42% rating it as "Good" and 25.59% rating it as "Excellent." While 31.76% considered it "Satisfactory," only 2.23% marked it as "Bad."

## **5. Quality of Teaching in Subjects:**

The teaching quality across subjects was rated favorably by the majority of students, with 35.48% rating it as "Good" and 21.94% as "Excellent." However, 39.72% still found the teaching to be "Satisfactory," and 2.86% felt the quality was "Bad."

## **6. Adherence to the Syllabus by Teachers:**

Regarding adherence to the syllabus, 45.81% of students believed it was followed well by the teachers, with 16.77% noting that it was always adhered to. On the other hand, 34.56% felt it was followed only sometimes, and 2.86% reported that it was rarely followed.

## **7. Academic Guidance from Department:**

Academic guidance from the department was rated positively, with 39.82% considering it "Good" and 19.45% finding it "Excellent." However, 36.96% felt the guidance was only "Satisfactory," and 3.78% found it lacking.

## **8. CIA Question Papers Coverage:**

Regarding the coverage of CIA (Continuous Internal Assessment) question papers, 48.48% of students felt that it covered 100% of the syllabus, while 41.38% found the coverage to be 75%. A smaller percentage of students found the coverage to be 50% (8.94%) or less than 50% (1.20%).

## **9. Impartiality in CIA Evaluation:**

In terms of impartiality in CIA evaluations, 45.35% of students felt that it was impartial sometimes, while 20.83% noted that it was rarely or occasionally impartial. On a positive note, 16.13% of students felt that the evaluation was most of the time impartial, and 17.70% considered it always impartial.

### **10. Mentoring Programme Benefit:**

The mentoring programme received mixed feedback. While 36.13% felt it was beneficial "To some extent," a significant portion of 32.90% believed it was "To a greater extent." However, 13.18% felt it was not at all useful, while 17.79% considered it "Highly useful."

### **11. Helpfulness of Non-Teaching Staff:**

The non-teaching staff were seen as "Mostly helpful" by 33.46% of students, with 21.84% stating that they were "Very helpful." However, 5.16% found them "Not at all helpful," and 39.54% felt that they were "Sometimes helpful."

### **12. Usefulness of Extension Programme (Outreach Programme):**

The extension programme also received diverse feedback, with 39.35% of students finding it "Sometimes useful," while 26.64% found it "Mostly useful." On the downside, 14.38% felt it was "Not at all useful."

### **13. Quality of Laboratory Facilities (Science Students):**

Among the science students, 36.77% rated the laboratory facilities as "Satisfactory," and 31.71% rated them as "Good." However, 4.24% rated the facilities as "Bad," and 12.90% considered them "Excellent," with 14.38% marking the option as "Not applicable."

### **14. Library Facilities:**

The library facilities were positively rated by most students, with 35.85% rating them as "Good" and 30.41% as "Excellent." However, 32.63% felt they were "Satisfactory," and only 1.11% considered them "Bad."

### **15. Classroom Facilities:**

Classroom facilities were rated as "Good" by 37.70% and "Excellent" by 23.87%. While 35.39% found them "Satisfactory," 3.04% considered them "Bad."

### **16. Computer Facilities:**

Computer facilities were found to be "Good" by 37.70% of students and "Satisfactory" by 36.22%. A portion of 20.46% rated them "Excellent," while 5.62% rated them as "Bad."

### **17. Intranet and Internet Facilities:**

The intranet and internet facilities were assessed by 36.77% of students as "Satisfactory," and 29.95% rated them as "Good." However, 15.12% found them "Bad," while 18.16% considered them "Excellent."

### **18. Cleanliness of the Campus:**

Campus cleanliness was rated positively, with 36.87% of students finding it "Good" and 33.18% considering it "Excellent." Only 1.01% rated it as "Bad," while 28.94% felt it was "Satisfactory."

### **19. Sports Facilities:**

Sports facilities were rated "Satisfactory" by 39.45% and "Good" by 35.30%, with 17.79% considering them "Excellent." However, 7.47% of students found the facilities "Bad."

### **20. Club/s Functioning:**

The functioning of college clubs was rated "Satisfactory" by 41.21% and "Good" by 32.81%. While 17.45% felt it was "Excellent," 8.53% of students considered it "Bad."

### **21. Student Council Election Conduct:**

Regarding the conduct of student council elections, 43.78% felt that it was done "Sometimes" while 26.36% believed it was done "Most of the time." Only 16.77% stated it was "Always" done appropriately, and 13.09% considered it done "Rarely."

### **22. Student Council Representation:**

Student council representation was also perceived as lacking by some students, with 45.16% feeling it occurred "Sometimes" and 23.13% reporting it "Most of the time." A smaller percentage (18.16%) found the representation to be "Rarely," and only 13.55% felt it was "Always."

### **23. Departmental Association Functioning:**

The functioning of departmental associations was rated "Satisfactory" by 41.01% of students and "Good" by 32.63%. However, 7.65% considered it "Bad," and 18.71% rated it as "Excellent."

### **24. Online Staff Evaluation Practice:**

Online staff evaluation was considered "Satisfactory" by 45.07% of students and "Good" by 30.05%. However, 7.93% felt it was "Bad," and 16.96% deemed it "Excellent."

### **25. Overall Experience at Loyola College:**

On the whole, the students' overall experience at Loyola College was positive, with 43.96% of respondents finding it "Highly rewarding and useful." A further 39.26% felt it was "To a greater extent" beneficial. Only 3.23% felt that their experience was not at all rewarding.

### **26. Syllabus Relevance and Update:**

The relevance and update of the syllabus were rated as "Somewhat" by 37.46% of students, with 36.53% considering it "Mostly" relevant. A smaller portion (22.29%) believed it was "Highly" relevant, while 3.72% felt it was not at all relevant.

### **27. Course Contents and Employability:**

The course contents' usefulness for employability was acknowledged, with 46.44% of students rating it "To some extent," and 29.41% considering it "To a great extent." However, 10.22% felt that it was "Not at all useful."

## **28. Relevance of Courses for Research:**

Courses' relevance for research was deemed "Good" by 36.53% of students, with 41.18% rating it as "Satisfactory." On the other hand, 4.02% felt the courses were "Bad" for research, and 18.27% found them "Excellent."

## **29. Availability of Books / Journals for Study/Reference:**

The availability of books and journals was mostly rated as "Good" by 39.32% and "Satisfactory" by 35.91%. However, 21.98% found the resources "Excellent," while 2.79% felt they were "Bad."

## **Conclusion:**

The overall feedback from students reveals that while Loyola College, Chennai, provides a well-rounded academic experience, there are areas for improvement, particularly in facilities, impartiality in evaluations, and certain aspects of student services. The positive response to the overall experience, the mentoring and internship programmes, and the academic guidance highlights the strengths of the institution, with scope for enhancing various facilities and processes.

**Prof. D. Francis Xavier**  
Coordinator, IQAC  
Loyola College (Autonomous)  
Chennai: 600 034

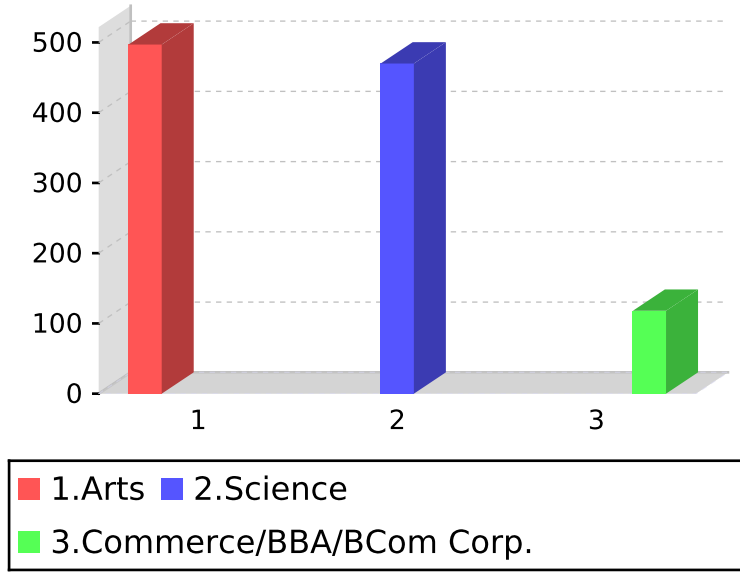
**Prof. D. Francis Xavier**  
**IQAC Coordinator**  
**Loyola College, Chennai-34**

**Dr. Dorathy Pushparani**  
Assistant Coordinator, IQAC  
Loyola College (Autonomous)  
Chennai: 600 034

**Dr. Dorathy Pushparani**  
**Assistant IQAC Coordinator**  
**Loyola College, Chennai-34**

**SHIFT I**  
**All Programs**  
**Students Profile**

Programme of Study



	Votes Count	Vote (%)
1.Arts	497	45.81
2.Science	470	43.32
3.Commerce/BBA/BCom Corp.	118	10.88



## **28. Relevance of Courses for Research:**

Courses' relevance for research was deemed "Good" by 36.53% of students, with 41.18% rating it as "Satisfactory." On the other hand, 4.02% felt the courses were "Bad" for research, and 18.27% found them "Excellent."

## **29. Availability of Books / Journals for Study/Reference:**

The availability of books and journals was mostly rated as "Good" by 39.32% and "Satisfactory" by 35.91%. However, 21.98% found the resources "Excellent," while 2.79% felt they were "Bad."

## **Conclusion:**

The overall feedback from students reveals that while Loyola College, Chennai, provides a well-rounded academic experience, there are areas for improvement, particularly in facilities, impartiality in evaluations, and certain aspects of student services. The positive response to the overall experience, the mentoring and internship programmes, and the academic guidance highlights the strengths of the institution, with scope for enhancing various facilities and processes.

**Prof. D. Francis Xavier**  
Coordinator, IQAC  
Loyola College (Autonomous)  
Chennai: 600 034

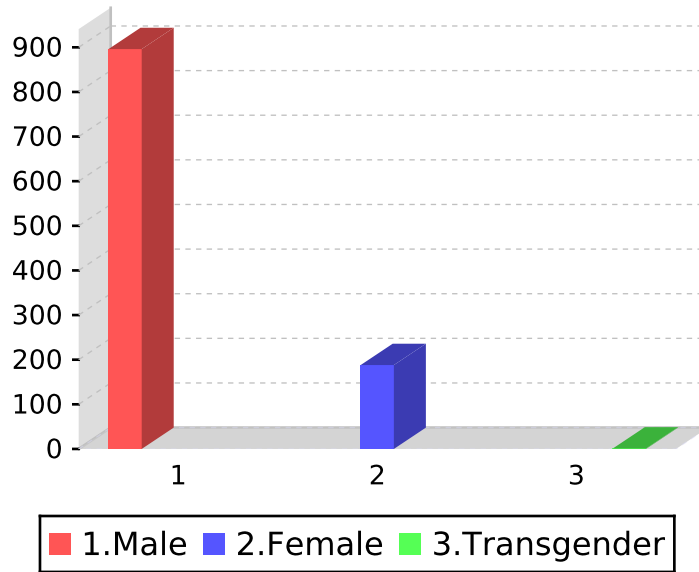
**Prof. D. Francis Xavier**  
**IQAC Coordinator**  
**Loyola College, Chennai-34**

**Dr. Dorathy Pushparani**  
Assistant Coordinator, IQAC  
Loyola College (Autonomous)  
Chennai: 600 034

**Dr. Dorathy Pushparani**  
**Assistant IQAC Coordinator**  
**Loyola College, Chennai-34**

**SHIFT I**  
**All Programs**  
**Students Profile**

Gender



	Votes Count	Vote (%)
1.Male	896	82.58
2.Female	188	17.33
3.Transgender	1	0.09

# SHIFT I

## All Programs

### Relevance of Syllabus under restructured curriculum

Quality and relevance of Skill-Based Programme



	Votes Count	Vote (%)
1.Bad	14	1.84
2.Satisfactory	279	36.61
3.Good	321	42.13
4.Excellent	148	19.42

# SHIFT I

## All Programs

### Relevance of Syllabus under restructured curriculum

Quality and relevance of Internship Programme



	Votes Count	Vote (%)
1.Bad	17	2.23
2.Satisfactory	242	31.76
3.Good	308	40.42
4.Excellent	195	25.59

**SHIFT I**  
**All Programs**  
**Teachers**

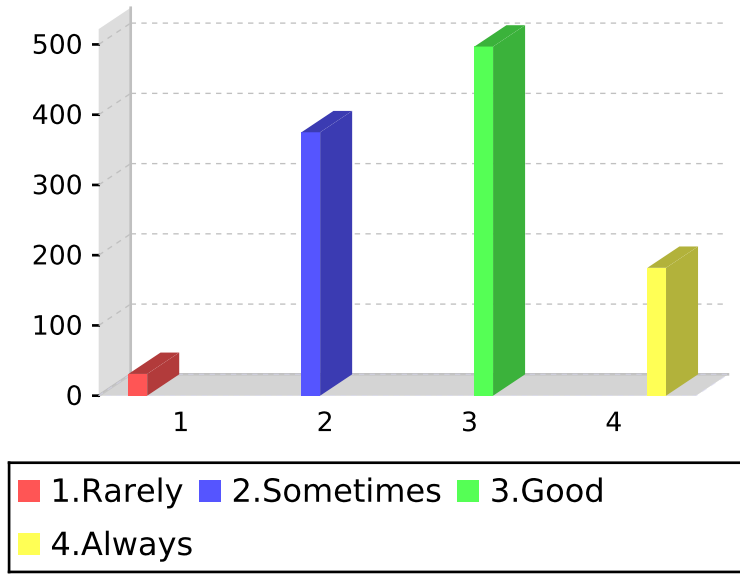
Quality of teaching in your subjects



	Votes Count	Vote (%)
1.Bad	31	2.86
2.Satisfactory	431	39.72
3.Good	385	35.48
4.Excellent	238	21.94

**SHIFT I**  
**All Programs**  
**Teachers**

Adherence to the syllabus by the teacher



	Votes Count	Vote (%)
1.Rarely	31	2.86
2.Sometimes	375	34.56
3.Good	497	45.81
4.Always	182	16.77

**SHIFT I**  
**All Programs**  
**Teachers**

Academic guidance received from your department



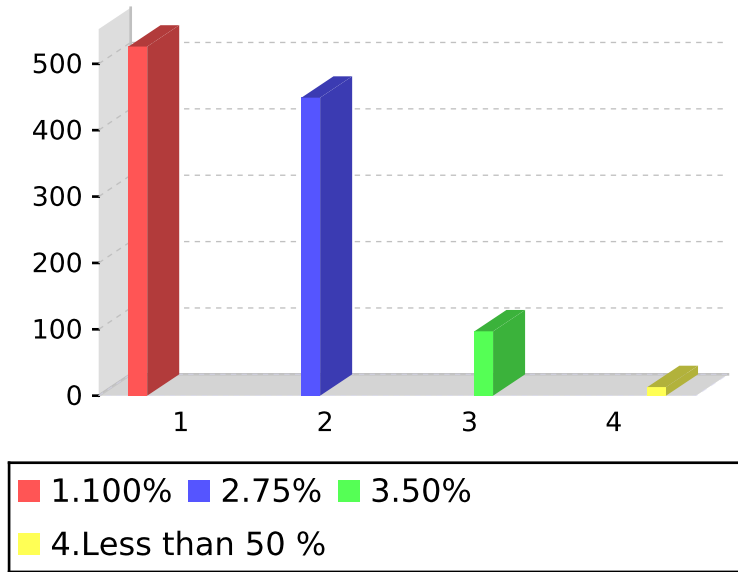
	Votes Count	Vote (%)
1.Low	41	3.78
2.Satisfactory	401	36.96
3.Good	432	39.82
4.Excellent	211	19.45

# SHIFT I

## All Programs

### Testing Methods (Continuous Assessment Test)

CIA Question papers cover the prescribed Syllabus



	Votes Count	Vote (%)
1.100%	526	48.48
2.75%	449	41.38
3.50%	97	8.94
4. Less than 50 %	13	1.20

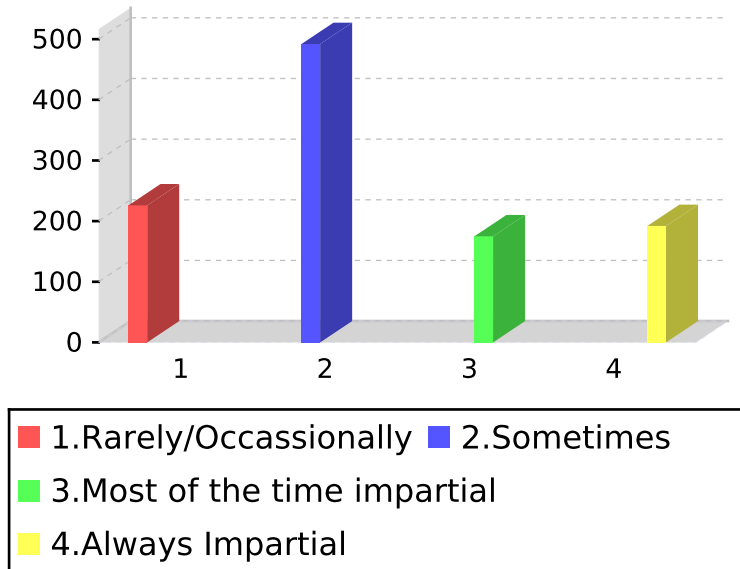


# SHIFT I

## All Programs

### Testing Methods (Continuous Assessment Test)

Impartiality in the evaluation of CIA answer papers



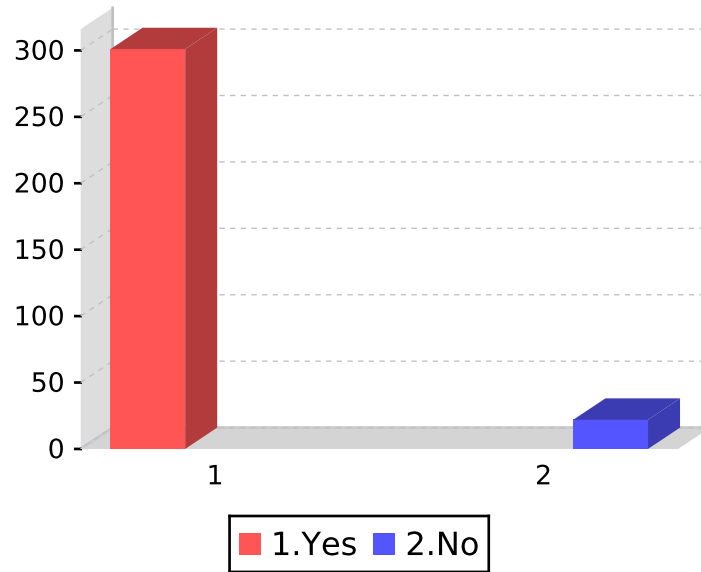
	Votes Count	Vote (%)
1. Rarely/Occasionally	226	20.83
2. Sometimes	492	45.35
3. Most of the time impartial	175	16.13
4. Always Impartial	192	17.70

# SHIFT I

## All Programs

### Testing Methods (Continuous Assessment Test)

Second component (30 marks) is taken seriously by the Department and teachers



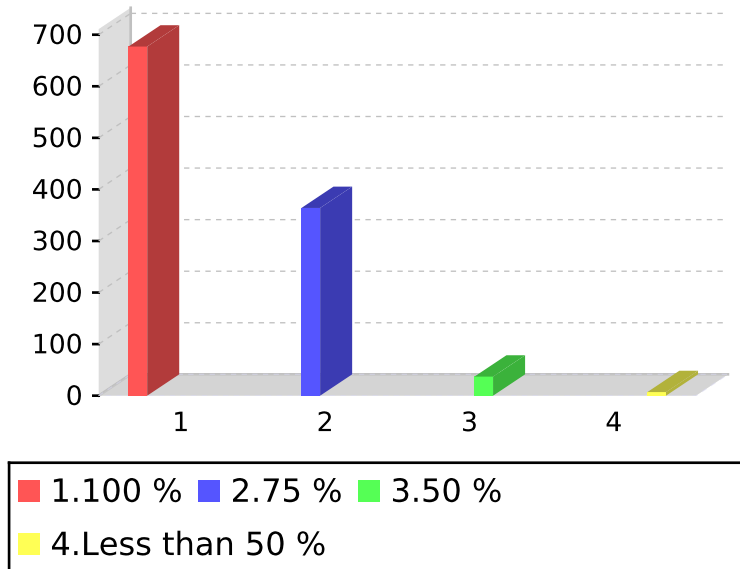
	Votes Count	Vote (%)
1.Yes	301	93.19
2.No	22	6.81

# SHIFT I

## All Programs

### Testing Methods (Semester Examinations)

Semester question papers cover all the units of the prescribed Syllabus



	Votes Count	Vote (%)
1.100 %	677	62.40
2.75 %	364	33.55
3.50 %	37	3.41
4.Less than 50 %	7	0.65

# SHIFT I

## All Programs

### Testing Methods (Semester Examinations)

Standard of the semester examination question paper



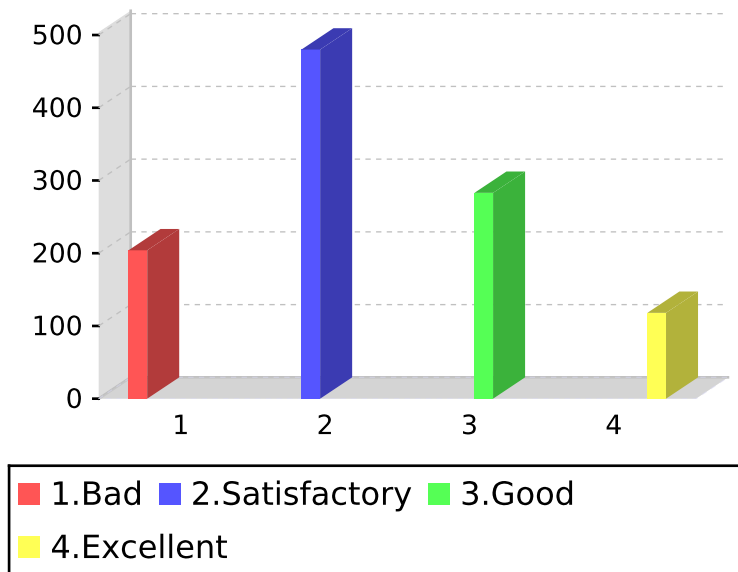
	Votes Count	Vote (%)
1.Low	28	2.58
2.Satisfactory	439	40.46
3.Good	429	39.54
4.Excellent	189	17.42

# SHIFT I

## All Programs

### Campus Placement

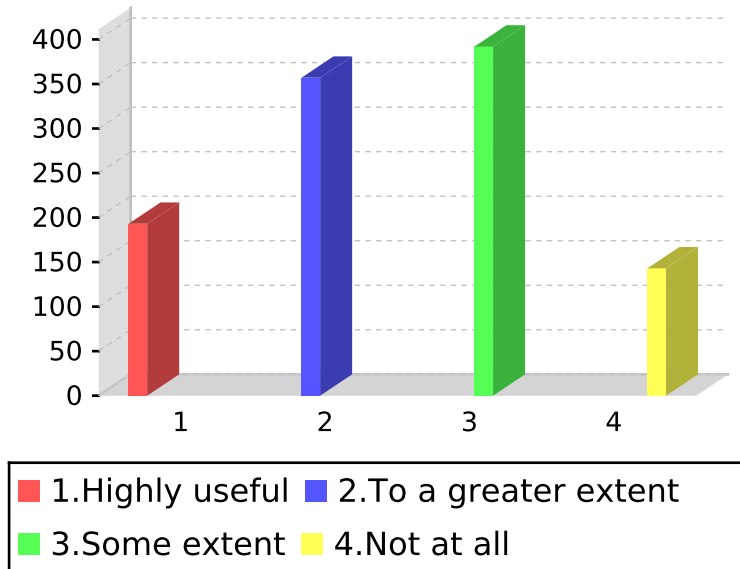
Campus Placement opportunities in the College are



	Votes Count	Vote (%)
1.Bad	204	18.80
2.Satisfactory	480	44.24
3.Good	283	26.08
4.Excellent	118	10.88

**SHIFT I**  
**All Programs**  
**Mentoring**

I am personally benefited by the Mentoring Programme



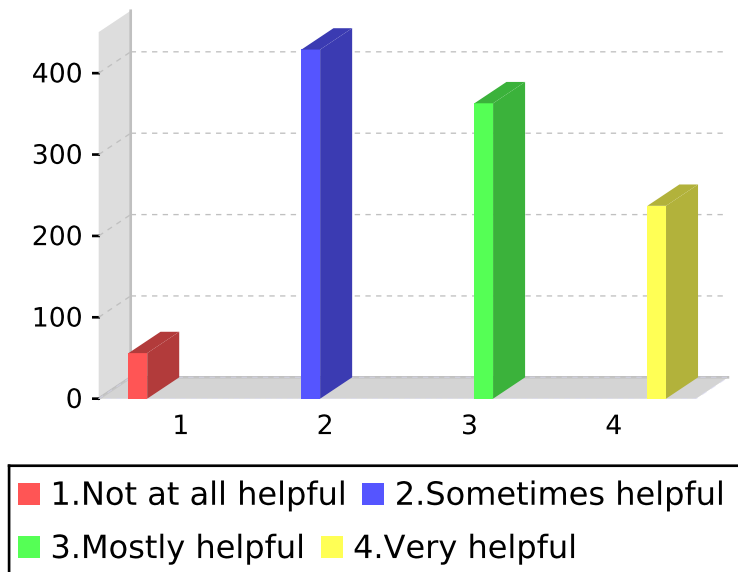
	Votes Count	Vote (%)
1.Highly useful	193	17.79
2.To a greater extent	357	32.90
3.Some extent	392	36.13
4.Not at all	143	13.18

# SHIFT I

## All Programs

### Services Rendered by Non-Teaching Staff

Helpfulness of non-teaching staff



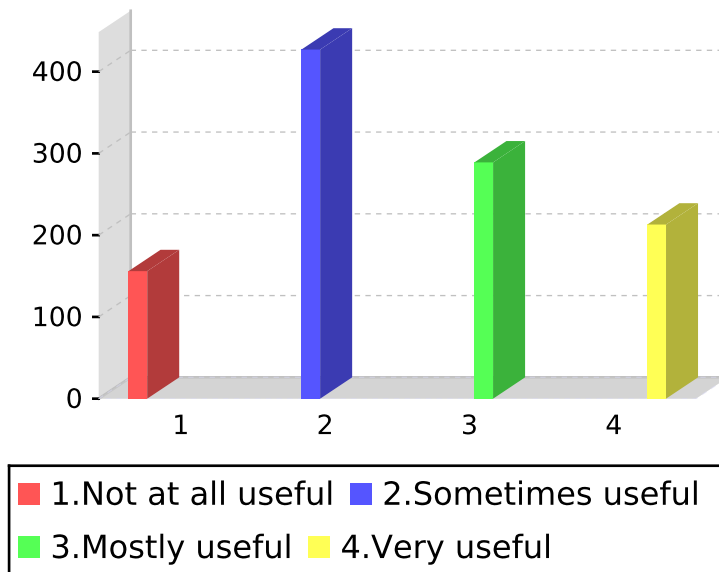
	Votes Count	Vote (%)
1. Not at all helpful	56	5.16
2. Sometimes helpful	429	39.54
3. Mostly helpful	363	33.46
4. Very helpful	237	21.84

# SHIFT I

## All Programs

### Extension and Outreach Programme

Usefulness of the extension programme (Outreach Programme)



	Votes Count	Vote (%)
1. Not at all useful	156	14.38
2. Sometimes useful	427	39.35
3. Mostly useful	289	26.64
4. Very useful	213	19.63

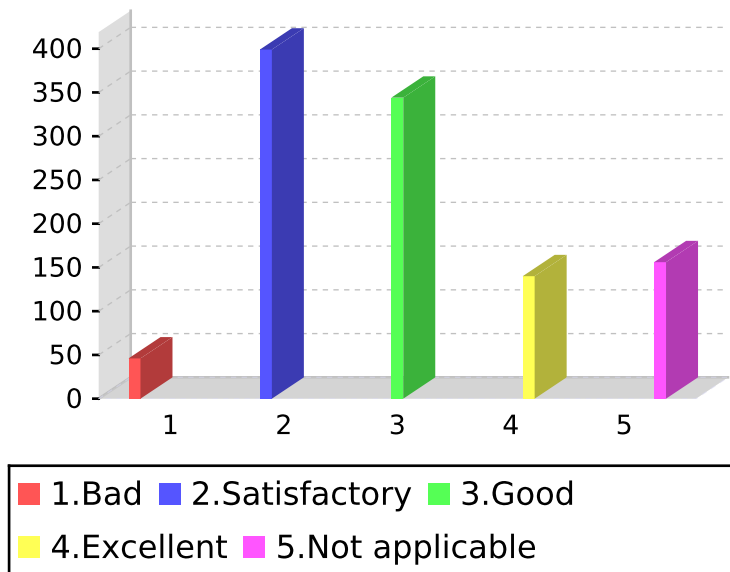


# SHIFT I

## All Programs

### Infrastructure of the Campus

Laboratory facilities made available: (Only for Science Students)



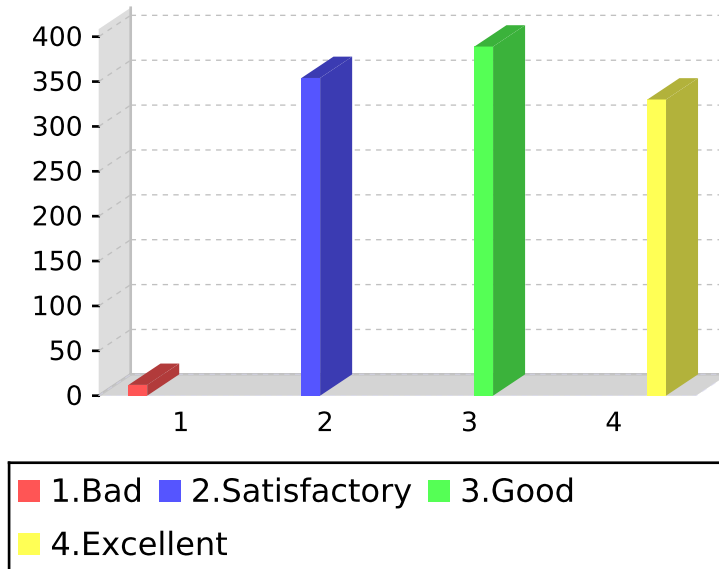
	Votes Count	Vote (%)
1.Bad	46	4.24
2.Satisfactory	399	36.77
3.Good	344	31.71
4.Excellent	140	12.90
5.Not applicable	156	14.38

# SHIFT I

## All Programs

### Infrastructure of the Campus

Library facilities made available:



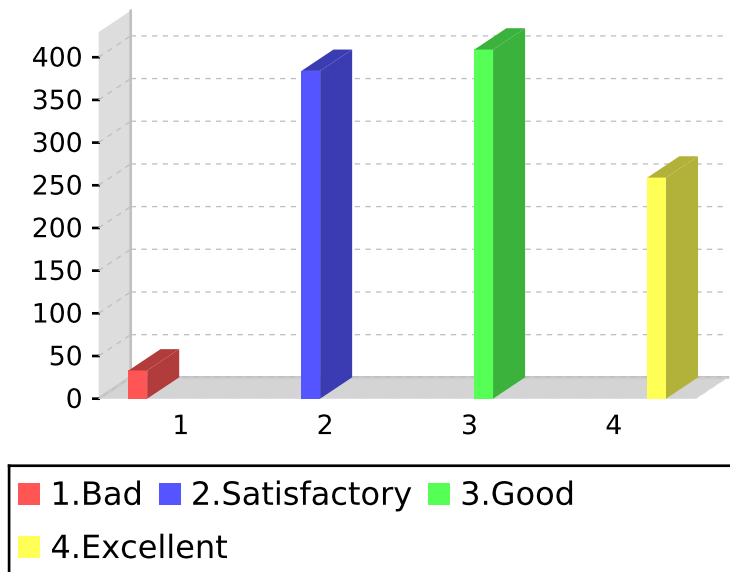
	Votes Count	Vote (%)
1.Bad	12	1.11
2.Satisfactory	354	32.63
3.Good	389	35.85
4.Excellent	330	30.41

# SHIFT I

## All Programs

### Infrastructure of the Campus

Class rooms made available:



	Votes Count	Vote (%)
1.Bad	33	3.04
2.Satisfactory	384	35.39
3.Good	409	37.70
4.Excellent	259	23.87

# SHIFT I

## All Programs

### Infrastructure of the Campus

Computer facilities made available:



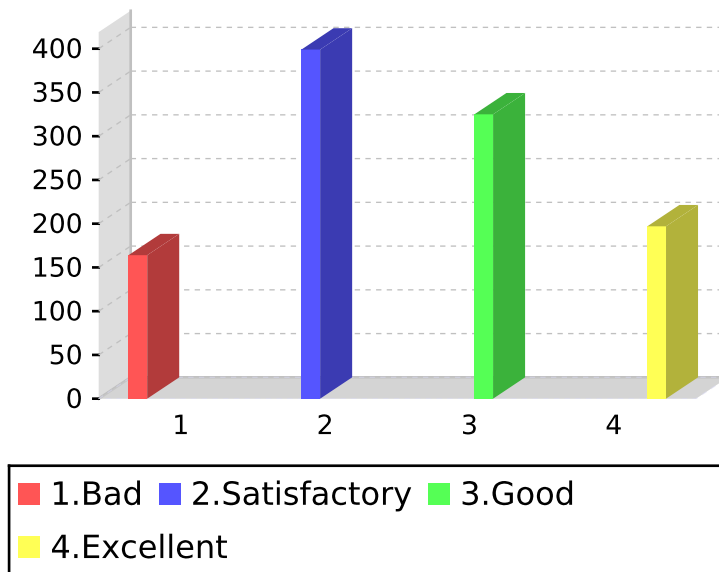
	Votes Count	Vote (%)
1.Bad	61	5.62
2.Satisfactory	393	36.22
3.Good	409	37.70
4.Excellent	222	20.46

# SHIFT I

## All Programs

### Infrastructure of the Campus

Intranet and Internet Facilities made available:



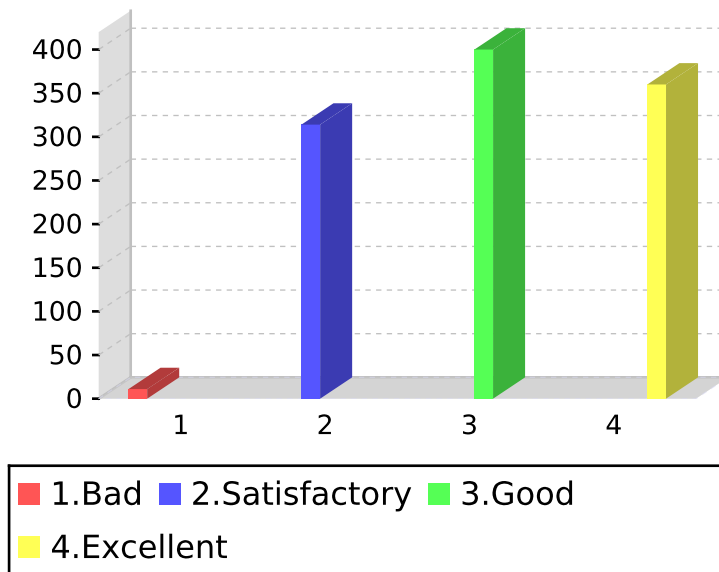
	Votes Count	Vote (%)
1.Bad	164	15.12
2.Satisfactory	399	36.77
3.Good	325	29.95
4.Excellent	197	18.16

# SHIFT I

## All Programs

### Infrastructure of the Campus

Cleanliness of the Campus



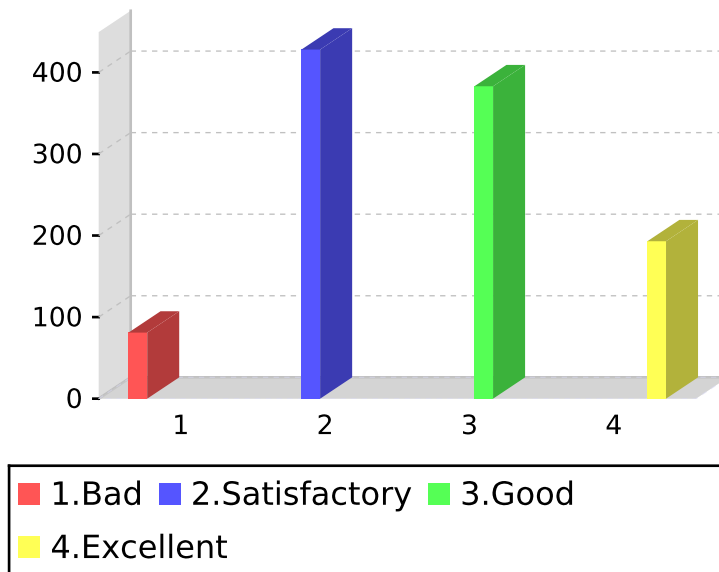
	Votes Count	Vote (%)
1.Bad	11	1.01
2.Satisfactory	314	28.94
3.Good	400	36.87
4.Excellent	360	33.18

# SHIFT I

## All Programs

### Extra-Curricular Activities

Sports facilities made available



	Votes Count	Vote (%)
1.Bad	81	7.47
2.Satisfactory	428	39.45
3.Good	383	35.30
4.Excellent	193	17.79

# SHIFT I

## All Programs

### Extra-Curricular Activities

Functioning of club/s



	Votes Count	Vote (%)
1.Bad	65	8.53
2.Satisfactory	314	41.21
3.Good	250	32.81
4.Excellent	133	17.45

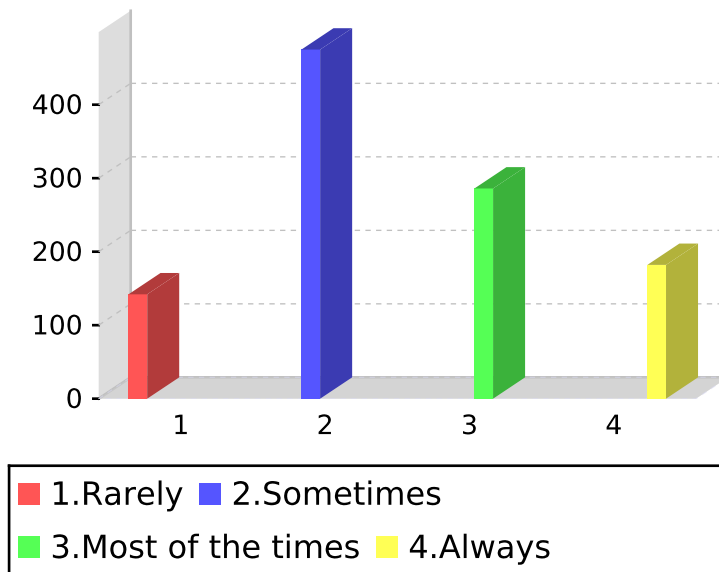


# SHIFT I

## All Programs

### Co-curricular Activities

Election to the student council is conducted freely and fairly



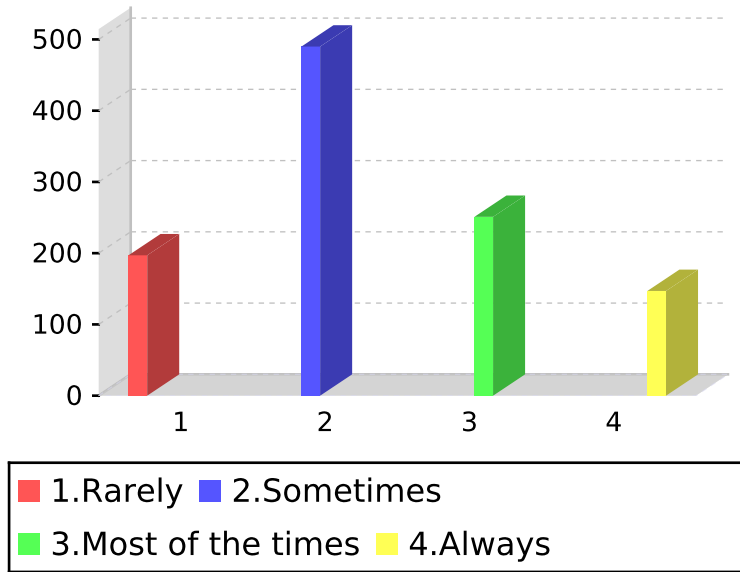
	Votes Count	Vote (%)
1.Rarely	142	13.09
2.Sometimes	475	43.78
3.Most of the times	286	26.36
4.Always	182	16.77

# SHIFT I

## All Programs

### Co-curricular Activities

Student Council represents all the students



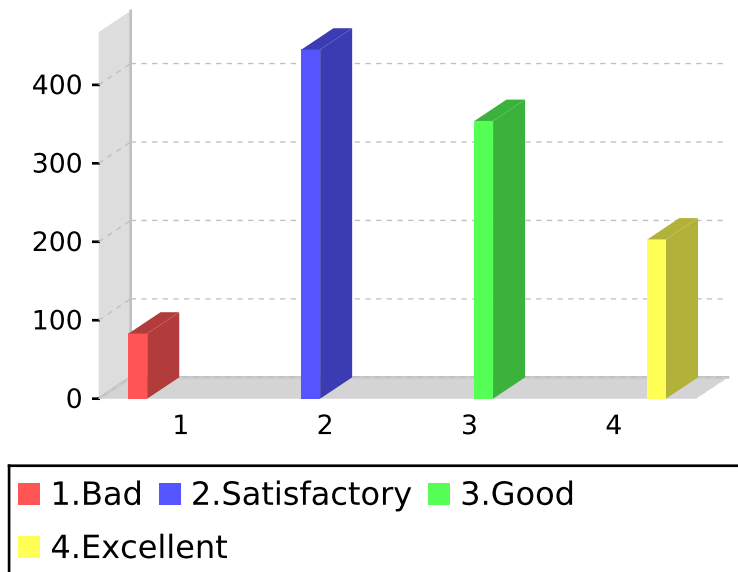
	Votes Count	Vote (%)
1. Rarely	197	18.16
2. Sometimes	490	45.16
3. Most of the times	251	23.13
4. Always	147	13.55

# SHIFT I

## All Programs

### Co-curricular Activities

Functioning of Departmental Association



	Votes Count	Vote (%)
1.Bad	83	7.65
2.Satisfactory	445	41.01
3.Good	354	32.63
4.Excellent	203	18.71

# SHIFT I

## All Programs

### Co-curricular Activities

#### ONLINE STAFF EVALUATION PRACTICE



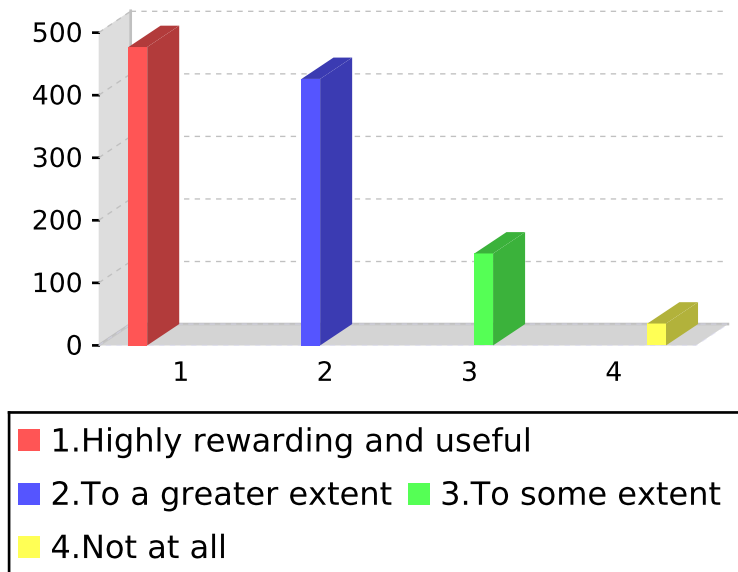
	Votes Count	Vote (%)
1.Bad	86	7.93
2.Satisfactory	489	45.07
3.Good	326	30.05
4.Excellent	184	16.96

# SHIFT I

## All Programs

### Co-curricular Activities

#### OVERALL EXPERIENCE AT LOYOLA COLLEGE



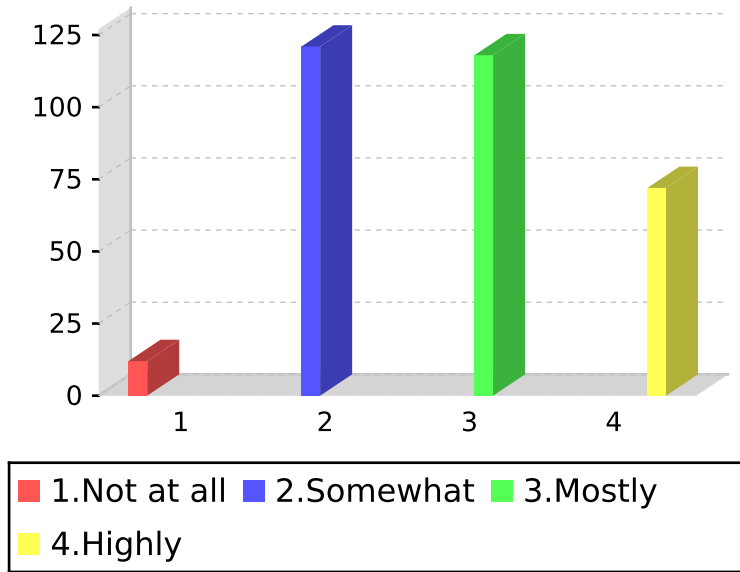
	Votes Count	Vote (%)
1.Highly rewarding and useful	477	43.96
2.To a greater extent	426	39.26
3.To some extent	147	13.55
4.Not at all	35	3.23

# SHIFT I

## All Programs

### Usefulness of the PG Course

The syllabus of Courses is relevant and updated



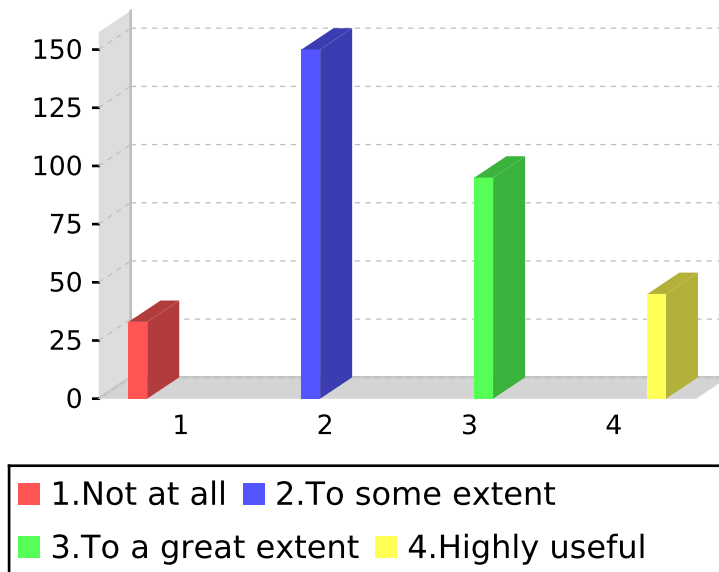
	Votes Count	Vote (%)
1. Not at all	12	3.72
2. Somewhat	121	37.46
3. Mostly	118	36.53
4. Highly	72	22.29

# SHIFT I

## All Programs

### Usefulness of the PG Course

The contents of courses are designed to secure a job (Employability)



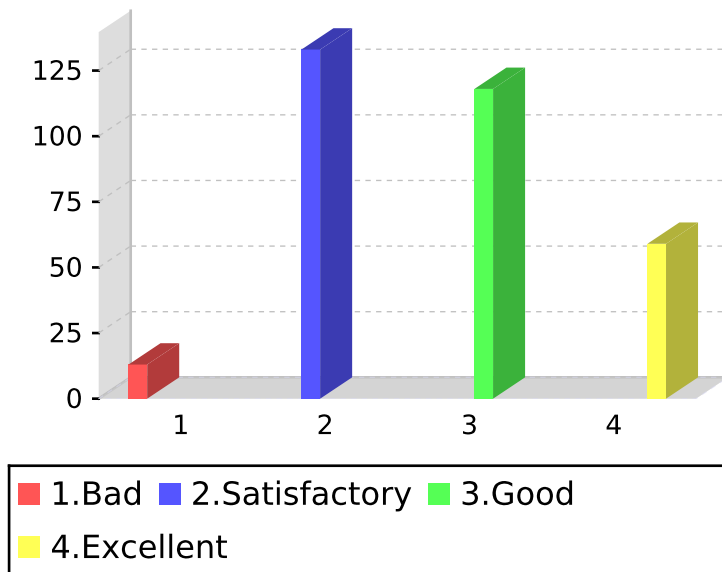
	Votes Count	Vote (%)
1. Not at all	33	10.22
2. To some extent	150	46.44
3. To a great extent	95	29.41
4. Highly useful	45	13.93

# SHIFT I

## All Programs

### Usefulness of the PG Course

Relevance of the courses in leading to research



	Votes Count	Vote (%)
1.Bad	13	4.02
2.Satisfactory	133	41.18
3.Good	118	36.53
4.Excellent	59	18.27



# SHIFT I

## All Programs

### Usefulness of the PG Course

Availability of Books / Journals for Study / Reference



	Votes Count	Vote (%)
1.Bad	9	2.79
2.Satisfactory	116	35.91
3.Good	127	39.32
4.Excellent	71	21.98

# **Exit Poll Report**

## **Shift-2, Loyola College, Chennai**

### **Summary**

An exit poll conducted at Loyola College (Shift-2) provided valuable insights into the student experience, covering academic quality, teaching, campus facilities, and overall satisfaction. The feedback highlighted both strengths and areas for improvement.

Students were distributed across Arts, Science, and Commerce, with a gender breakdown showing 90.61% male and 9.39% female. Most students rated the quality of skill-based and internship programmes positively, though teaching quality was seen as satisfactory by a significant number. Academic guidance received good ratings, but only a small percentage of teachers consistently adhered to the syllabus.

Facilities such as the library and classrooms were generally well-regarded, though internet and computer services drew some criticism. The campus mentoring programme was found helpful by many, though some students reported limited benefits. Concerns were also raised about impartiality in evaluating Continuous Internal Assessment (CIA) papers.

Campus placements and sports facilities were identified as key areas needing improvement. On the whole, the majority of students found their time at Loyola College beneficial, though there is room to enhance the employability and research relevance of the courses.

In conclusion, while Loyola College (Shift-2) provides a positive learning environment, addressing gaps in placements, evaluation practices, and extracurricular offerings could further improve the student experience.

### **Findings of the Exit Polls (Shift-2)**

The Exit Poll conducted at Loyola College, Chennai (Shift-2), provides a comprehensive overview of student feedback on various aspects of their academic life, including the quality of programmes, teaching, campus facilities, and the overall educational experience. The findings generally indicate positive responses while highlighting areas for improvement.

#### **1. Programme of Study Distribution**

The student population is distributed among Arts (33.21%), Science (27.97%), and Commerce/BBA/BCom Corporate (38.83%).

#### **2. Gender Breakdown**

The survey showed that 90.61% of the respondents were male, 9.39% female, and no transgender representation.

#### **3. Quality and Relevance of Skill-Based Programmes**

Students rated the skill-based programmes with 18.25% considering them excellent, 40.61% as good, 38.10% as satisfactory, and 3.04% as bad.

#### **4. Quality and Relevance of Internship Programmes**

Regarding internship programmes, 23.73% of the respondents found them excellent, 40.53% good, 33.31% satisfactory, and 2.43% bad.

#### **5. Quality of Teaching**

In terms of teaching quality, 17.43% of students rated it excellent, 35.12% good, 42.40% satisfactory, and 5.04% bad.

#### **6. Adherence to the Syllabus by Teachers**

Students indicated that 13.92% of teachers always adhered to the syllabus, 43.49% did so most of the time, 39.02% sometimes, and 3.58% rarely.

#### **7. Academic Guidance Received from the Department**

The feedback on academic guidance showed 18.14% of students rated it as excellent, 35.82% good, 40.29% satisfactory, and 5.75% low.

#### **8. CIA Question Papers Coverage**

The question papers in Continuous Internal Assessment (CIA) covered 100% of the syllabus for 45.08% of respondents, 75% for 43.42%, 50% for 11.05%, and less than 50% for 0.45%.

#### **9. Impartiality in the Evaluation of CIA Answer Papers**

Impartiality in evaluation was perceived as always impartial by 12.77%, most of the time by 20.18%, sometimes by 47.45%, and rarely or occasionally by 19.60%.

#### **10. Semester Question Papers Coverage**

Semester question papers covered 100% of the syllabus according to 59.83% of students, 75% for 35.82%, 50% for 4.02%, and less than 50% for 0.32%.

#### **11. Standard of Semester Examination Question Paper**

The standard of the semester examination question papers was rated as excellent by 14.69%, good by 37.68%, satisfactory by 44.83%, and low by 2.81%.

#### **12. Campus Placement Opportunities**

Placement opportunities at Loyola College were seen as excellent by 9.90%, good by 26.56%, satisfactory by 44.76%, and bad by 18.77%.

#### **13. Personal Benefit from the Mentoring Programme**

The mentoring programme was highly useful for 15.39% of respondents, useful to a greater extent for 33.72%, useful to some extent for 37.10%, and not useful at all for 13.79%.

#### **14. Helpfulness of Non-Teaching Staff**

The non-teaching staff was perceived as very helpful by 15.01%, mostly helpful by 29.50%, sometimes helpful by 46.17%, and not helpful at all by 9.32%.

#### **15. Usefulness of the Extension (Outreach) Programme**

The outreach programme was rated as very useful by 14.50% of students, mostly useful by 25.61%, sometimes useful by 41.12%, and not at all useful by 18.77%.

### **16. Laboratory Facilities (Science Students)**

Among science students, laboratory facilities were rated excellent by 9.26%, good by 23.56%, satisfactory by 40.93%, bad by 7.41%, and not applicable by 18.84%.

### **17. Library Facilities**

Library facilities were rated excellent by 21.84% of students, good by 35.89%, satisfactory by 39.59%, and bad by 2.68%.

### **18. Classroom Facilities**

Classroom facilities were rated excellent by 17.37%, good by 33.33%, satisfactory by 41.63%, and bad by 7.66%.

### **19. Computer Facilities**

Computer facilities were rated excellent by 14.56%, good by 31.93%, satisfactory by 45.15%, and bad by 8.37%.

### **20. Intranet and Internet Facilities**

Intranet and internet facilities were considered excellent by 11.69%, good by 26.69%, satisfactory by 39.72%, and bad by 21.90%.

### **21. Cleanliness of the Campus**

Campus cleanliness was rated excellent by 24.14% of students, good by 35.95%, satisfactory by 37.29%, and bad by 2.62%.

### **22. Cleanliness of the Classrooms**

The cleanliness of classrooms was rated excellent by 18.39%, good by 35.31%, satisfactory by 39.91%, and bad by 6.39%.

### **23. Sports Facilities**

Sports facilities were rated excellent by 11.94%, good by 31.23%, satisfactory by 44.19%, and bad by 12.64%.

### **24. Functioning of Clubs and Societies**

The functioning of clubs and societies was rated excellent by 13.00%, good by 28.97%, satisfactory by 46.31%, and bad by 11.71%.

### **25. Election to the Student Council**

The election process for the Student Council was rated as always conducted by 12.26%, most of the time by 26.76%, sometimes by 45.91%, and rarely by 15.07%.

### **26. Student Council Representation**

The Student Council was seen to represent all students always by 10.98%, most of the time by 21.52%, sometimes by 49.23%, and rarely by 18.26%.

### **27. Functioning of Departmental Associations**

The functioning of departmental associations was rated excellent by 13.67%, good by 32.12%, satisfactory by 46.74%, and bad by 7.47%.

### **28. Online Staff Evaluation Practice**

Online staff evaluations were rated excellent by 11.05%, good by 30.78%, satisfactory by 50.00%, and bad by 8.17%.

### **29. Overall Experience at Loyola College**

Overall, 39.08% of respondents described their experience at Loyola College as highly rewarding and useful, 42.78% as beneficial to a greater extent, 14.75% to some extent, and 3.38% not at all.

### **30. Relevance and Update of the Course Syllabus**

Students rated the relevance and update of the course syllabus as highly relevant by 18.33%, mostly by 36.25%, somewhat by 37.45%, and not at all by 7.97%.

### **31. Employability of Course Content**

The course content's relevance to employability was rated highly useful by 9.96%, useful to a great extent by 27.49%, useful to some extent by 53.39%, and not at all useful by 9.16%.

### **32. Relevance of the Courses to Research**

The relevance of courses to research was rated excellent by 13.15%, good by 36.25%, satisfactory by 43.43%, and bad by 7.17%.

### **33. Availability of Books and Journals**

The availability of books and journals for study and reference was rated excellent by 11.16%, good by 37.85%, satisfactory by 43.03%, and bad by 7.97%.

## **Conclusion**

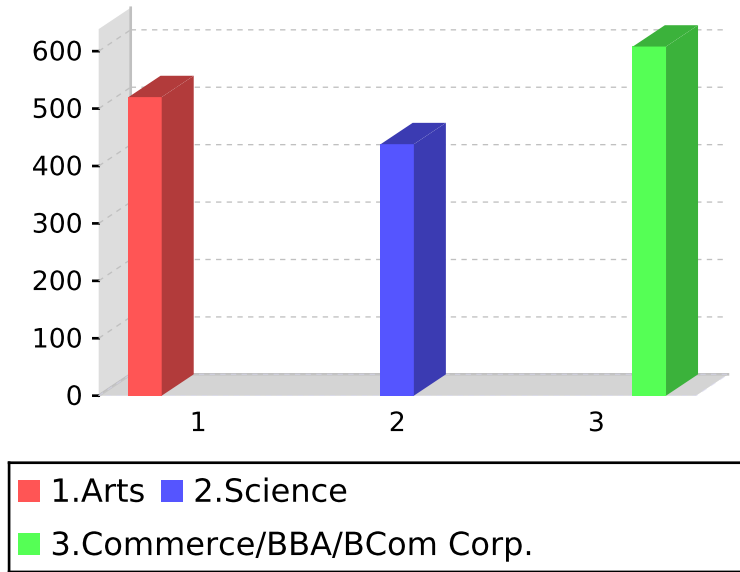
This report offers valuable insights into the experiences of students at Loyola College (Shift-2). While there is overall satisfaction in several key areas, including teaching quality and infrastructure, areas such as campus placements, impartiality in evaluation, and sports facilities may require further attention to enhance the student experience.”

**Prof. D. Francis Xavier**  
Coordinator, IQAC  
Loyola College (Autonomous)  
Chennai: 600 034

**Dr. Dorathy Pushparani**  
Assistant Coordinator, IQAC  
Loyola College (Autonomous)  
Chennai: 600 034

**SHIFT II**  
**All Programs**  
**Students Profile**

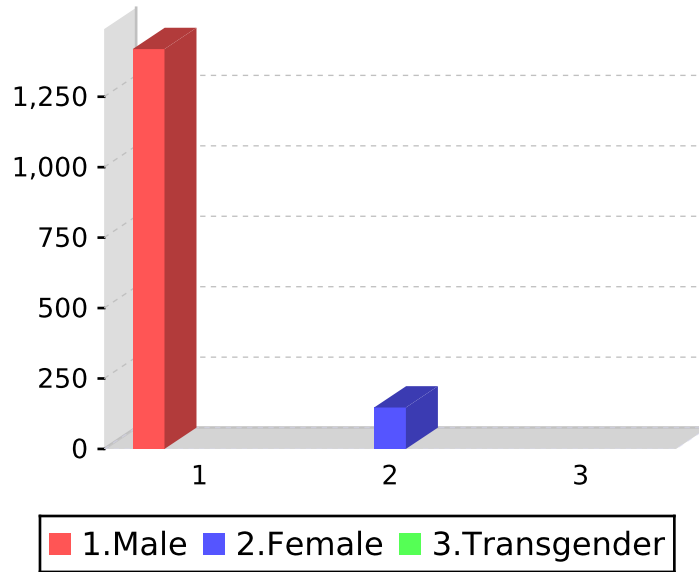
Programme of Study



	Votes Count	Vote (%)
1.Arts	520	33.21
2.Science	438	27.97
3.Commerce/BBA/BCom Corp.	608	38.83

**SHIFT II**  
**All Programs**  
**Students Profile**

Gender



	Votes Count	Vote (%)
1.Male	1419	90.61
2.Female	147	9.39
3.Transgender	0	0.00

**SHIFT II**  
**All Programs**

**Relevance of Syllabus under restructured curriculum**

Quality and relevance of Skill-Based Programme



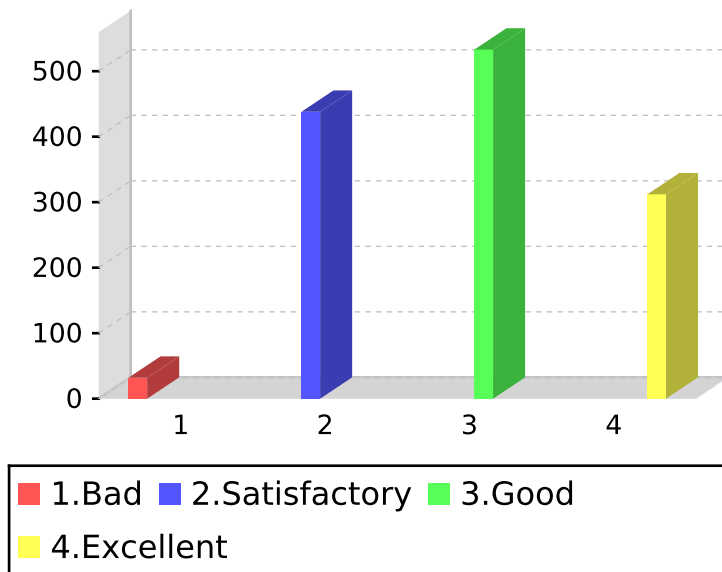
	Votes Count	Vote (%)
1.Bad	40	3.04
2.Satisfactory	501	38.10
3.Good	534	40.61
4.Excellent	240	18.25



**SHIFT II**  
**All Programs**

**Relevance of Syllabus under restructured curriculum**

Quality and relevance of Internship Programme



	Votes Count	Vote (%)
1.Bad	32	2.43
2.Satisfactory	438	33.31
3.Good	533	40.53
4.Excellent	312	23.73

**SHIFT II**  
**All Programs**  
**Teachers**

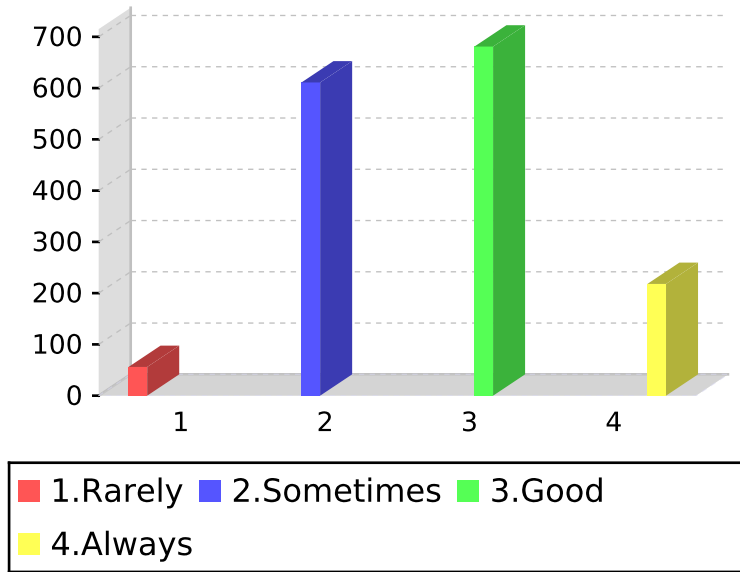
Quality of teaching in your subjects



	Votes Count	Vote (%)
1.Bad	79	5.04
2.Satisfactory	664	42.40
3.Good	550	35.12
4.Excellent	273	17.43

**SHIFT II**  
**All Programs**  
**Teachers**

Adherence to the syllabus by the teacher



	Votes Count	Vote (%)
1.Rarely	56	3.58
2.Sometimes	611	39.02
3.Good	681	43.49
4.Always	218	13.92

**SHIFT II**  
**All Programs**  
**Teachers**

Academic guidance received from your department

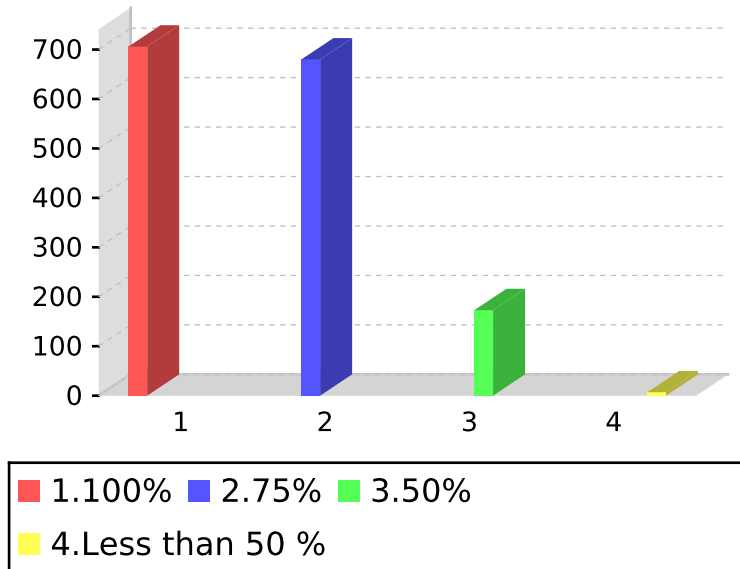


	Votes Count	Vote (%)
1.Low	90	5.75
2.Satisfactory	631	40.29
3.Good	561	35.82
4.Excellent	284	18.14

**SHIFT II**  
**All Programs**

**Testing Methods (Continuous Assessment Test)**

CIA Question papers cover the prescribed Syllabus



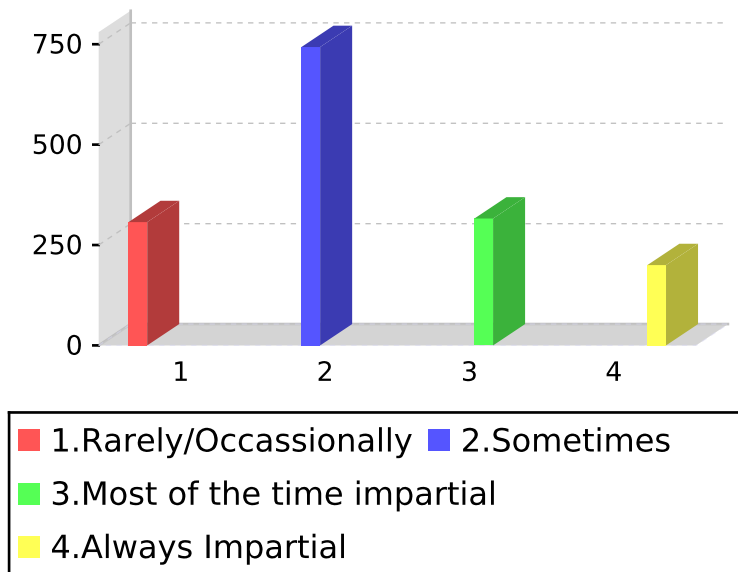
	Votes Count	Vote (%)
1.100%	706	45.08
2.75%	680	43.42
3.50%	173	11.05
4. Less than 50 %	7	0.45

## SHIFT II

### All Programs

### Testing Methods (Continuous Assessment Test)

Impartiality in the evaluation of CIA answer papers

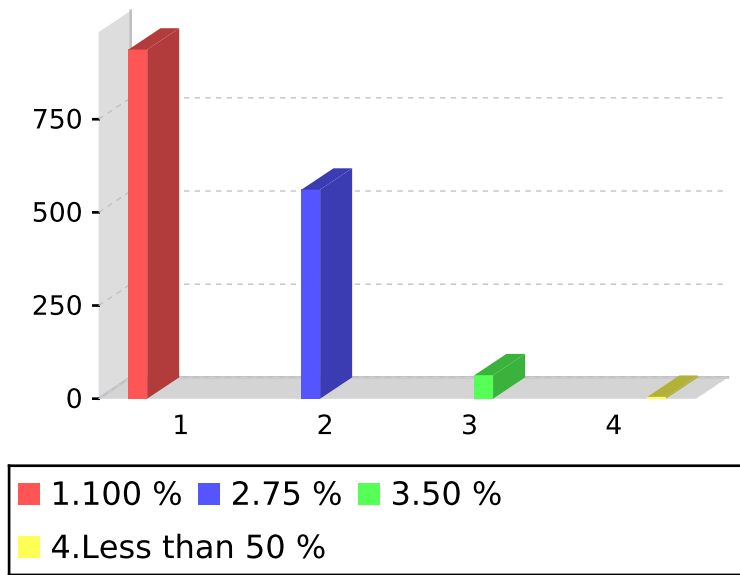


	Votes Count	Vote (%)
1. Rarely/Occasionally	307	19.60
2. Sometimes	743	47.45
3. Most of the time impartial	316	20.18
4. Always Impartial	200	12.77

**SHIFT II**  
**All Programs**

**Testing Methods (Semester Examinations)**

Semester question papers cover all the units of the prescribed Syllabus



	Votes Count	Vote (%)
1.100 %	937	59.83
2.75 %	561	35.82
3.50 %	63	4.02
4. Less than 50 %	5	0.32

**SHIFT II**  
**All Programs**

**Testing Methods (Semester Examinations)**

Standard of the semester examination question paper



	Votes Count	Vote (%)
1.Low	44	2.81
2.Satisfactory	702	44.83
3.Good	590	37.68
4.Excellent	230	14.69

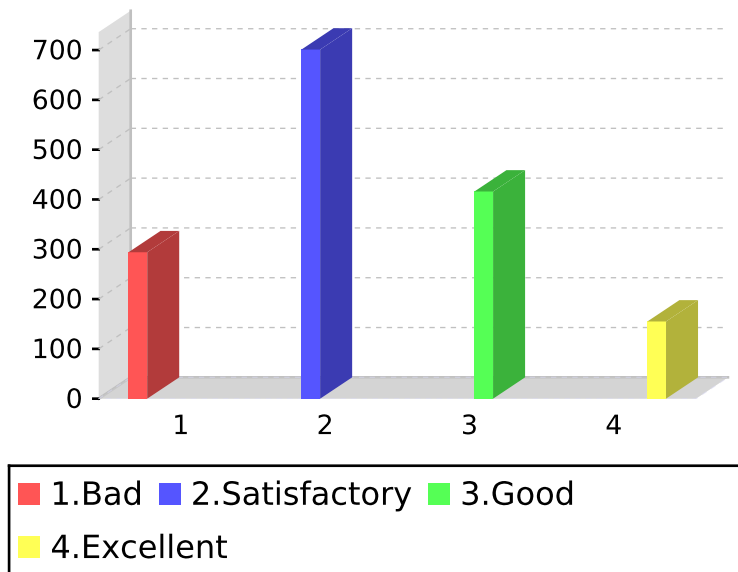


## SHIFT II

### All Programs

### Campus Placement

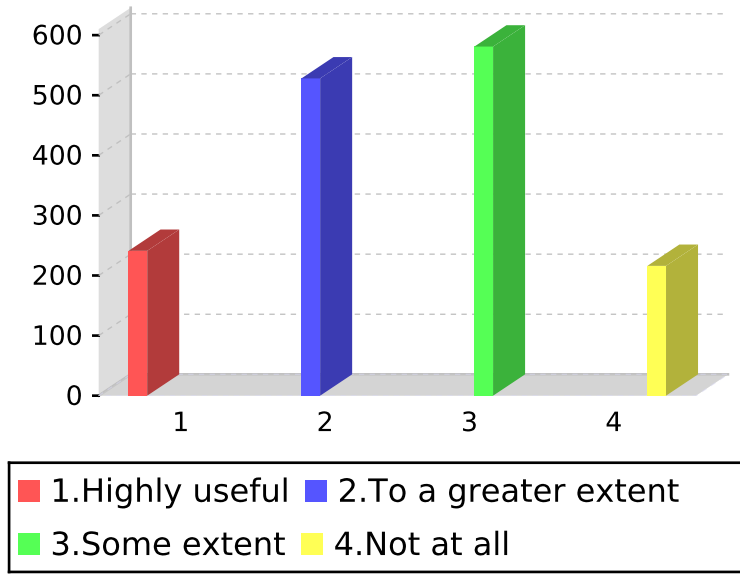
Campus Placement opportunities in the College are



	Votes Count	Vote (%)
1.Bad	294	18.77
2.Satisfactory	701	44.76
3.Good	416	26.56
4.Excellent	155	9.90

**SHIFT II**  
**All Programs**  
**Mentoring**

I am personally benefited by the Mentoring Programme

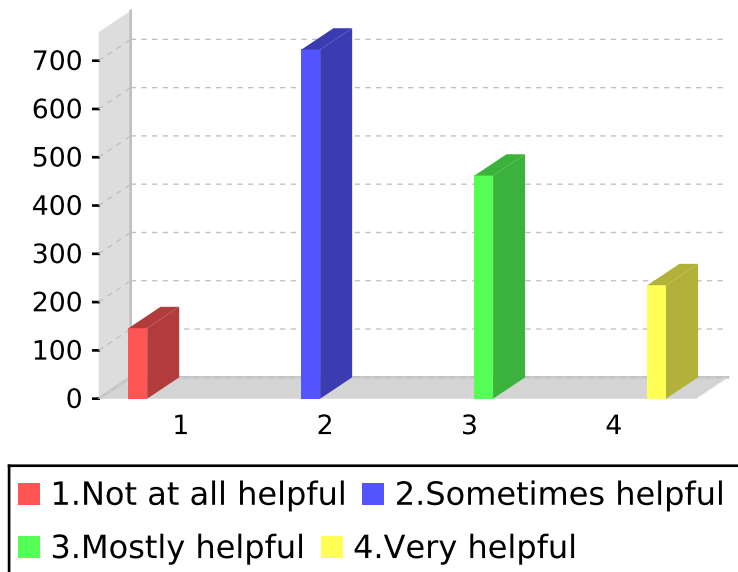


	Votes Count	Vote (%)
1.Highly useful	241	15.39
2.To a greater extent	528	33.72
3.Some extent	581	37.10
4.Not at all	216	13.79

**SHIFT II**  
**All Programs**

**Services Rendered by Non-Teaching Staff**

Helpfulness of non-teaching staff

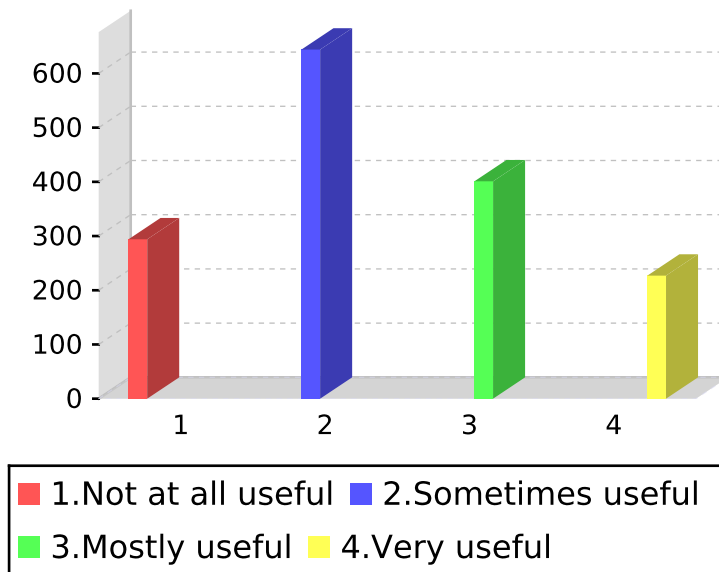


	Votes Count	Vote (%)
1. Not at all helpful	146	9.32
2. Sometimes helpful	723	46.17
3. Mostly helpful	462	29.50
4. Very helpful	235	15.01

**SHIFT II**  
**All Programs**

**Extension and Outreach Programme**

Usefulness of the extension programme (Outreach Programme)

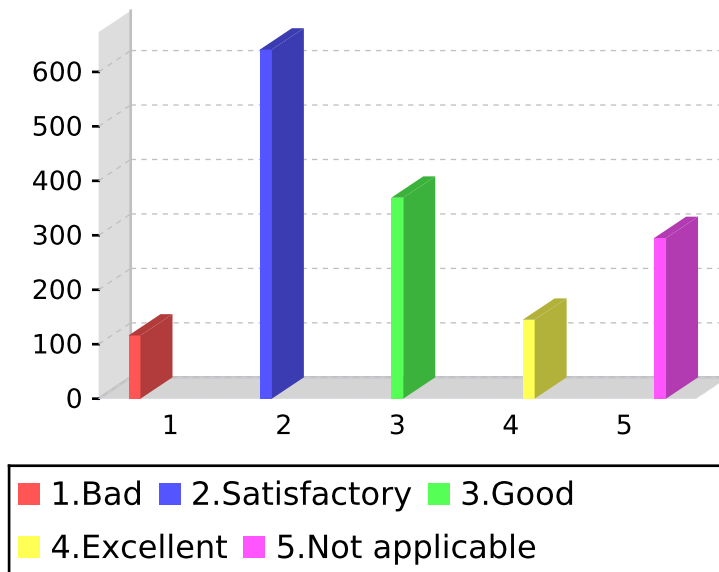


	Votes Count	Vote (%)
1. Not at all useful	294	18.77
2. Sometimes useful	644	41.12
3. Mostly useful	401	25.61
4. Very useful	227	14.50

**SHIFT II**  
**All Programs**

**Infrastructure of the Campus**

Laboratory facilities made available: (Only for Science Students)



	Votes Count	Vote (%)
1.Bad	116	7.41
2.Satisfactory	641	40.93
3.Good	369	23.56
4.Excellent	145	9.26
5.Not applicable	295	18.84

**SHIFT II**  
**All Programs**

**Infrastructure of the Campus**

Library facilities made available:



	Votes Count	Vote (%)
1.Bad	42	2.68
2.Satisfactory	620	39.59
3.Good	562	35.89
4.Excellent	342	21.84

**SHIFT II**  
**All Programs**

**Infrastructure of the Campus**

Class rooms made available:



	Votes Count	Vote (%)
1.Bad	120	7.66
2.Satisfactory	652	41.63
3.Good	522	33.33
4.Excellent	272	17.37

**SHIFT II**  
**All Programs**

**Infrastructure of the Campus**

Computer facilities made available:



	Votes Count	Vote (%)
1.Bad	131	8.37
2.Satisfactory	707	45.15
3.Good	500	31.93
4.Excellent	228	14.56



**SHIFT II**  
**All Programs**

**Infrastructure of the Campus**

Intranet and Internet Facilities made available:



	Votes Count	Vote (%)
1.Bad	343	21.90
2.Satisfactory	622	39.72
3.Good	418	26.69
4.Excellent	183	11.69

**SHIFT II**  
**All Programs**

**Infrastructure of the Campus**

Cleanliness of the Campus



	Votes Count	Vote (%)
1.Bad	41	2.62
2.Satisfactory	584	37.29
3.Good	563	35.95
4.Excellent	378	24.14

**SHIFT II**  
**All Programs**

**Infrastructure of the Campus**

Cleanliness of the Classrooms



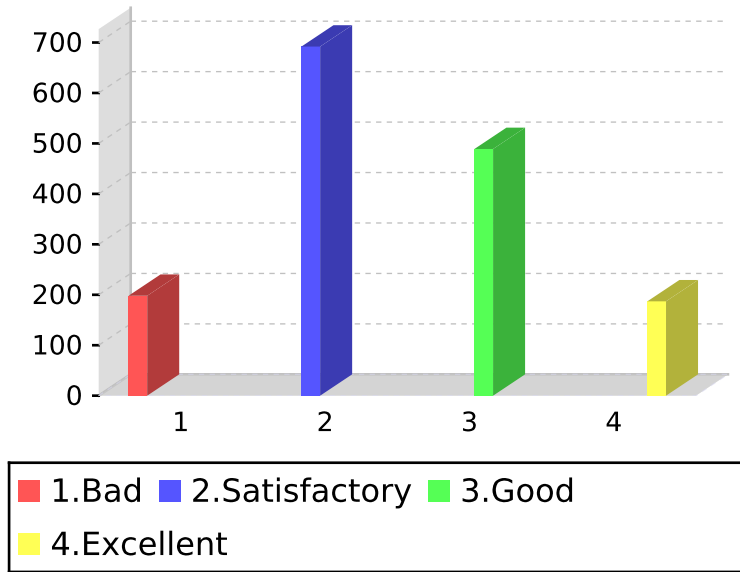
	Votes Count	Vote (%)
1.Bad	100	6.39
2.Satisfactory	625	39.91
3.Good	553	35.31
4.Excellent	288	18.39

## SHIFT II

### All Programs

### Extra-Curricular Activities

Sports facilities made available



	Votes Count	Vote (%)
1.Bad	198	12.64
2.Satisfactory	692	44.19
3.Good	489	31.23
4.Excellent	187	11.94

## SHIFT II

### All Programs

### Extra-Curricular Activities

Functioning of club/s



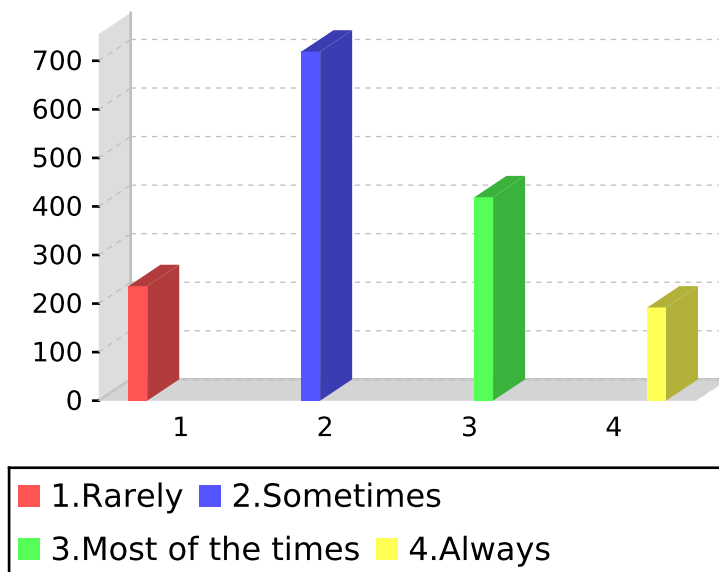
	Votes Count	Vote (%)
1.Bad	154	11.71
2.Satisfactory	609	46.31
3.Good	381	28.97
4.Excellent	171	13.00

## SHIFT II

### All Programs

### Co-curricular Activities

Election to the student council is conducted freely and fairly



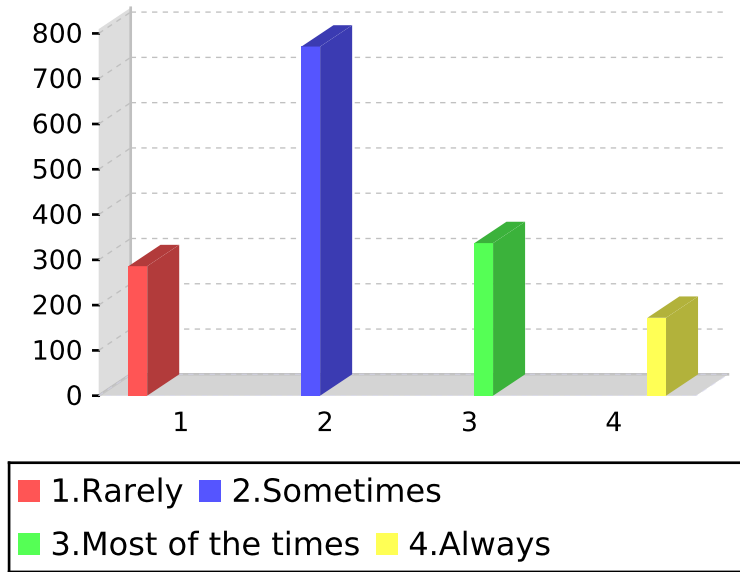
	Votes Count	Vote (%)
1. Rarely	236	15.07
2. Sometimes	719	45.91
3. Most of the times	419	26.76
4. Always	192	12.26

## SHIFT II

### All Programs

### Co-curricular Activities

Student Council represents all the students



	Votes Count	Vote (%)
1. Rarely	286	18.26
2. Sometimes	771	49.23
3. Most of the times	337	21.52
4. Always	172	10.98

## SHIFT II

### All Programs

### Co-curricular Activities

Functioning of Departmental Association



	Votes Count	Vote (%)
1.Bad	117	7.47
2.Satisfactory	732	46.74
3.Good	503	32.12
4.Excellent	214	13.67

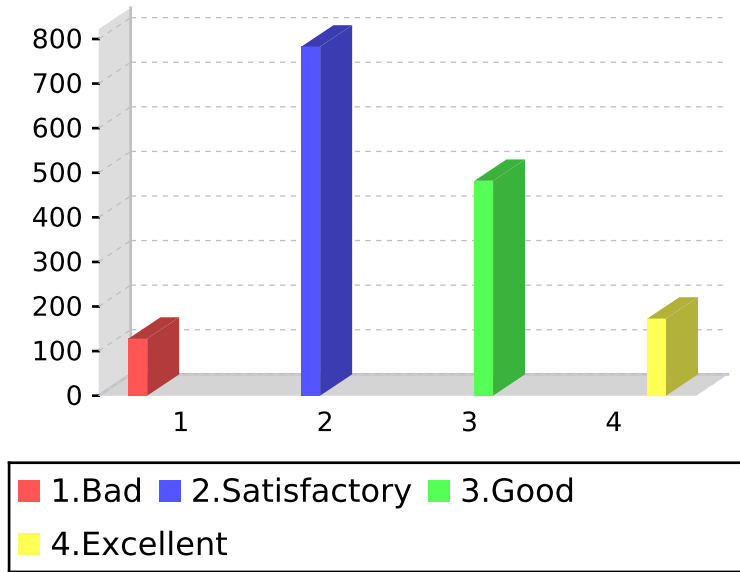


## SHIFT II

### All Programs

### Co-curricular Activities

#### ONLINE STAFF EVALUATION PRACTICE



	Votes Count	Vote (%)
1.Bad	128	8.17
2.Satisfactory	783	50.00
3.Good	482	30.78
4.Excellent	173	11.05

## SHIFT II

### All Programs

### Co-curricular Activities

#### OVERALL EXPERIENCE AT LOYOLA COLLEGE

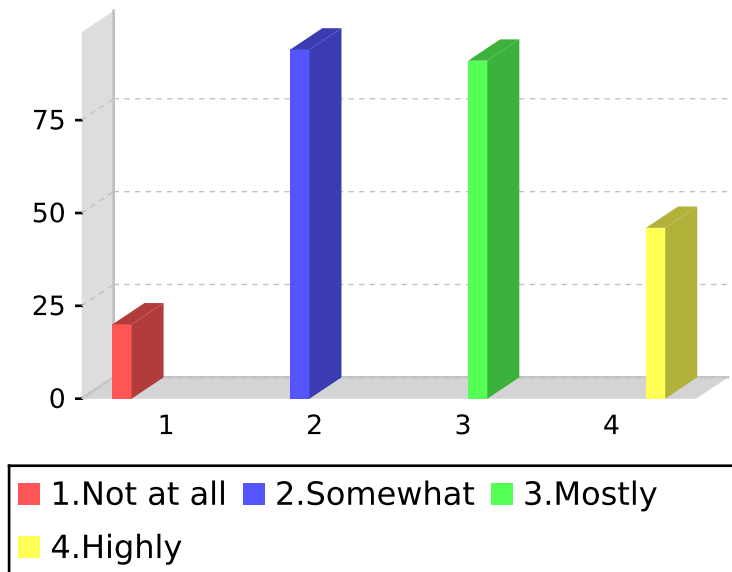


	Votes Count	Vote (%)
1.Highly rewarding and useful	612	39.08
2.To a greater extent	670	42.78
3.To some extent	231	14.75
4.Not at all	53	3.38

**SHIFT II**  
**All Programs**

**Usefulness of the PG Course**

The syllabus of Courses is relevant and updated

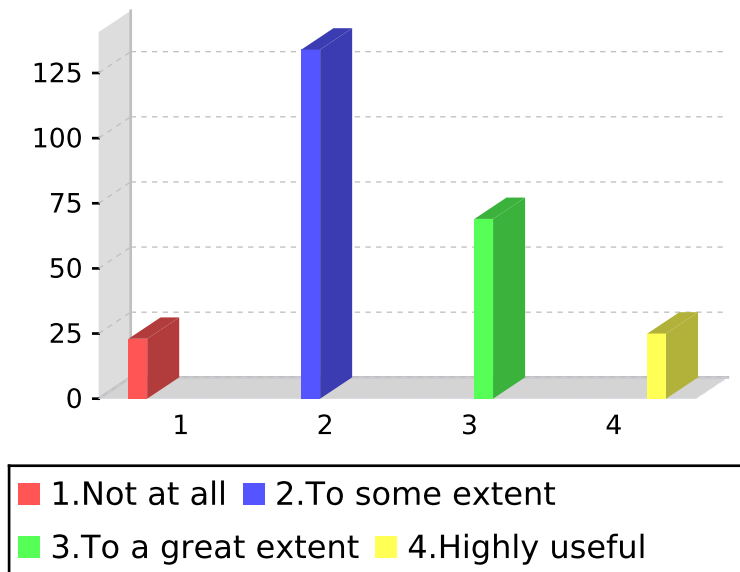


	Votes Count	Vote (%)
1. Not at all	20	7.97
2. Somewhat	94	37.45
3. Mostly	91	36.25
4. Highly	46	18.33

**SHIFT II**  
**All Programs**

**Usefulness of the PG Course**

The contents of courses are designed to secure a job (Employability)



	Votes Count	Vote (%)
1. Not at all	23	9.16
2. To some extent	134	53.39
3. To a great extent	69	27.49
4. Highly useful	25	9.96

**SHIFT II**  
**All Programs**

**Usefulness of the PG Course**

Relevance of the courses in leading to research



	Votes Count	Vote (%)
1.Bad	18	7.17
2.Satisfactory	109	43.43
3.Good	91	36.25
4.Excellent	33	13.15

**SHIFT II**  
**All Programs**

**Usefulness of the PG Course**

Availability of Books / Journals for Study / Reference



	Votes Count	Vote (%)
1.Bad	20	7.97
2.Satisfactory	108	43.03
3.Good	95	37.85
4.Excellent	28	11.16

